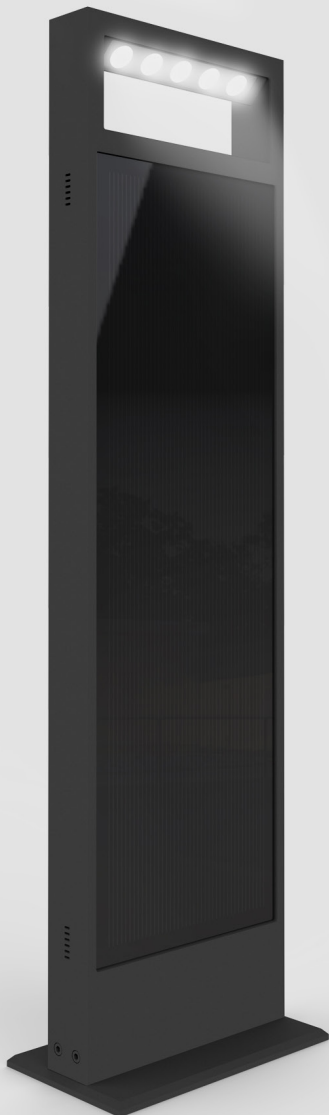


brilliance in solar lighting

photinus

Datasheet

juno



juno



**GERMAN
DESIGN
AWARD
SPECIAL
2019**



SELF-SUFFICIENT SOLAR LED LIGHT FOR SIDEWALKS, DRIVEWAYS, PARKS AND MORE

USE

Photinus has developed an innovative technology with its vertical facing solar module, which has opened new dimensions in both design and functionality. This unique construction guarantees unrestricted energy intake and cannot be blocked by snow or foliage.

Furthermore, in poor light conditions, 100% of the light reflection will be absorbed, which is a significant advantage to traditional solar lights. With the elegant design there are no limits to the possibilities for this luminaire.

The juno solar light is ideal lighting for sidewalks, driveways, pedestrian paths, parks, private garden facilities, promenades, boardwalks and any location where there is no access to electrical power.

FUNCTION

The integrated battery is charged by the photinus high performance photovoltaic module and at dusk conditions this energy is used to efficiently operate the LED.

GUARANTEE

3 years

The warranty of the solar illumination is provided, as far as the illumination is installed like described in the installation instructions. The warranty is void, if the product settings haven't been changed by photinus authorized employees/partners and/or using non-photinus approved tools.

SOLAR LIGHT	juno
SOLAR MODULES	
Solar module	monocrystalline silicon cells with exceptional efficiency specially processed by photinus
Efficiency	20%
Max. performance of the energy column Pmpp	27 Wp / 1 solar module Module are also charged up in cloudy conditions.
Protection class	IK06
BATTERY	
Battery	NiMh / 108Wh (12V / 13Ah)
Operating temperature	Charge and discharge temperature -45°C to +65°C
Battery life	5 to 7 years
LIGHTS	
Max. luminous flux	Depending on the location where the light is staying. (max. 1000 lm) <u>Location: Luminous flux / autonomy time / normal mode / smart mode</u> 47. degrees lat. (Munich): 600 lm / V5 / 7 days / 18 days
Max. Efficiency	170lm/W
LED module / max. watts	15 W
Colour temperature	3000K (standard)
Life of LED	>75 000 h (L80)
Protection class	IP 65
MATERIALS	
Metal parts	powder-coated aluminium Farbe: Tiger 29/70787 „Sparkling iron effect dark“

Technical changes reserved!

DIMENSIONS	
Total height from ground level	900 mm (without base plate)
Height of light from ground level	865 mm
Width of the solar light	242 mm
Strenght of the solar light	52 mm
Base plate	255 mm x 150 mm x 10 mm

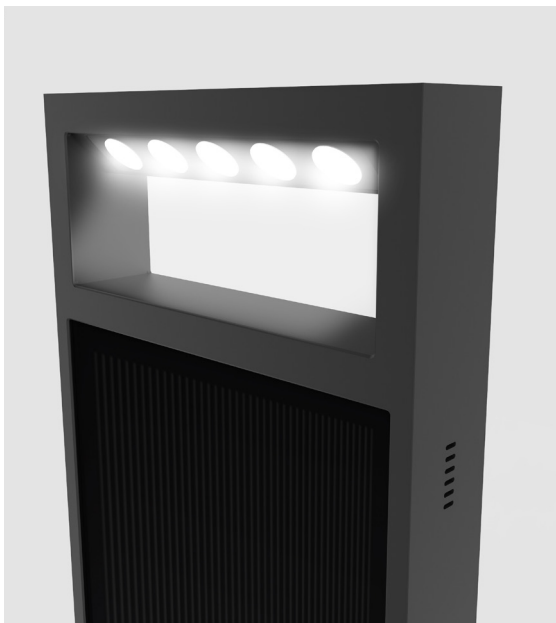
DIMENSION AND WEIGHT FOR SHIPPING	
Solar lamp in a carton	920 mm x 270 mm x 90 mm
Weight	16 kg

Salt spray test (ISO 9227:2012)

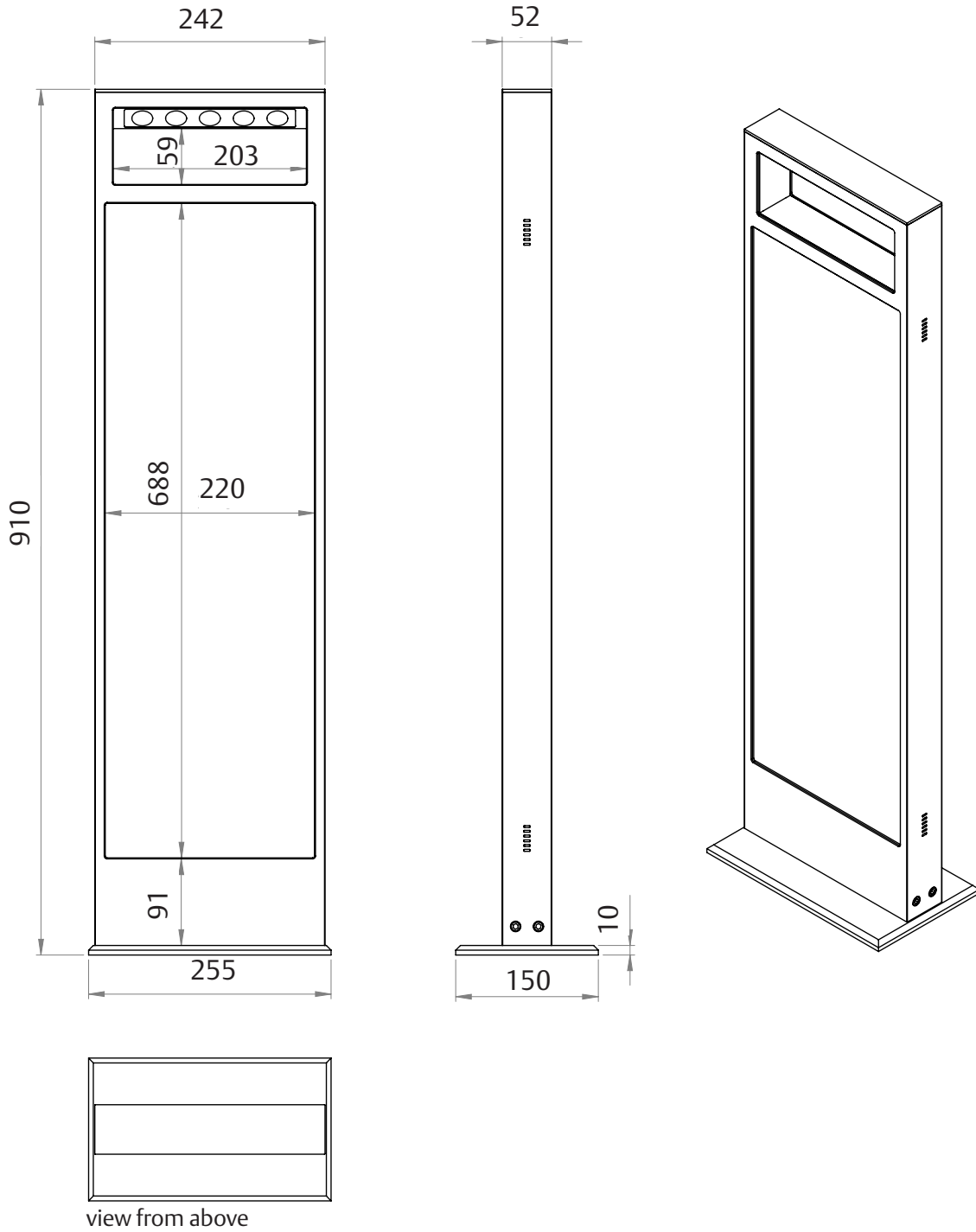
Corrosion test in artificial atmosphere - salt spray test (ISO 9227:2012)

All solar lights have successfully passed the salt spray test.

Details

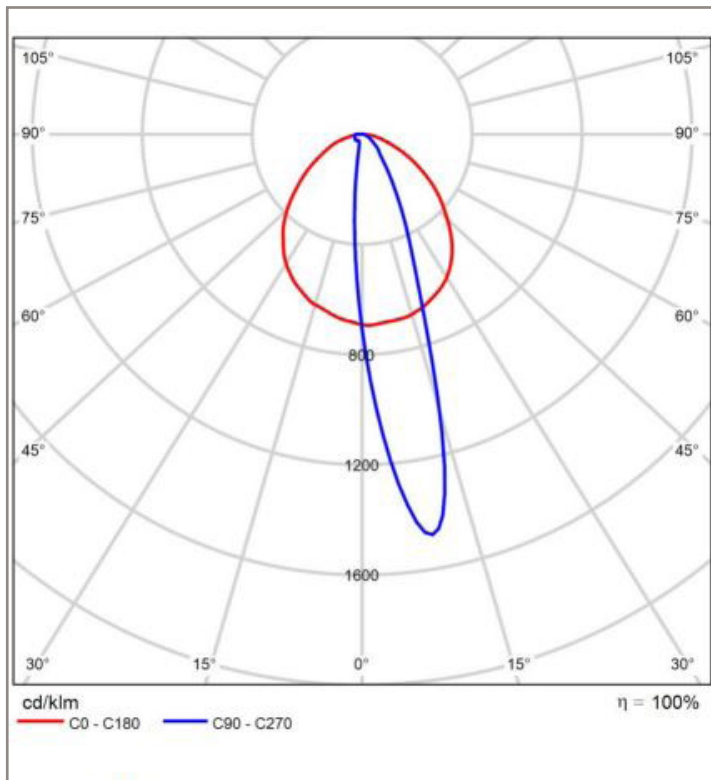
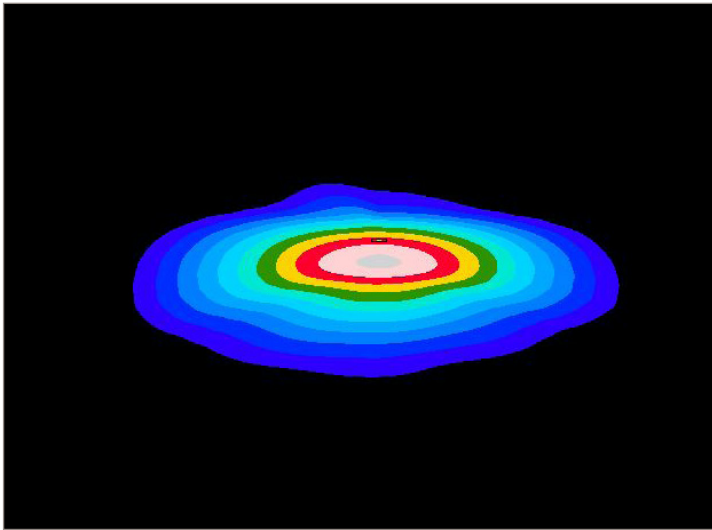


Dimensions



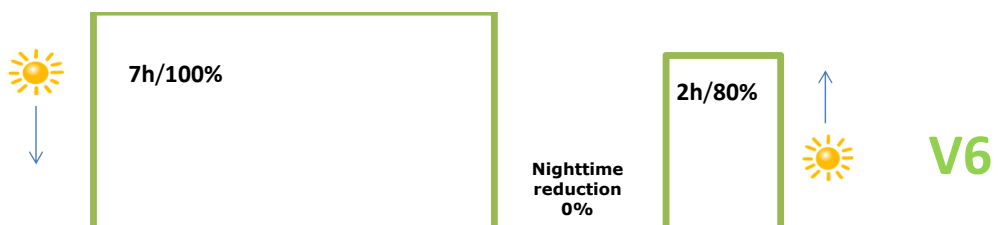
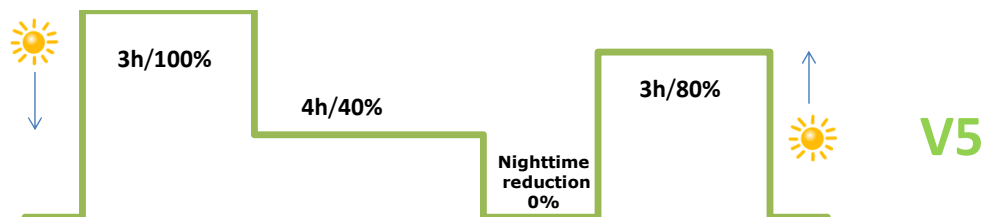
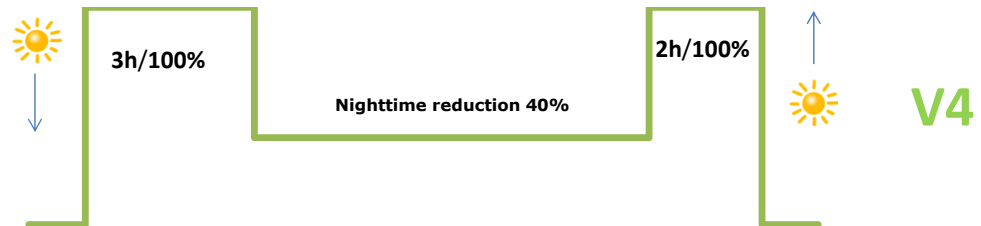
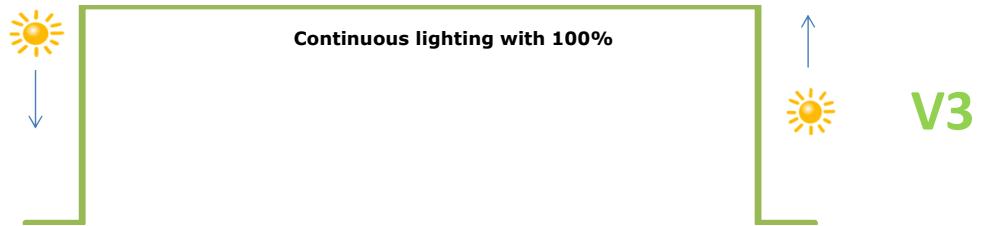
juno OPTIC

Perfect for walkways, pathways, driveways, courtyards and garden facilities.

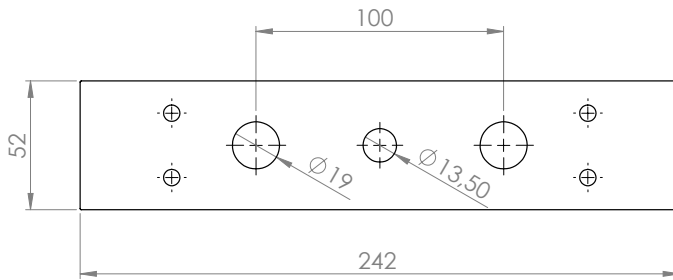
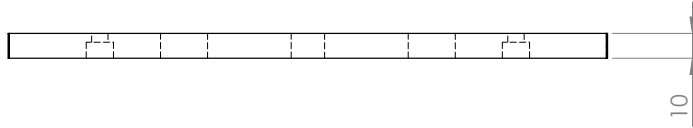


ENERGY AND TIME MANAGEMENT

Standard factory setting V5



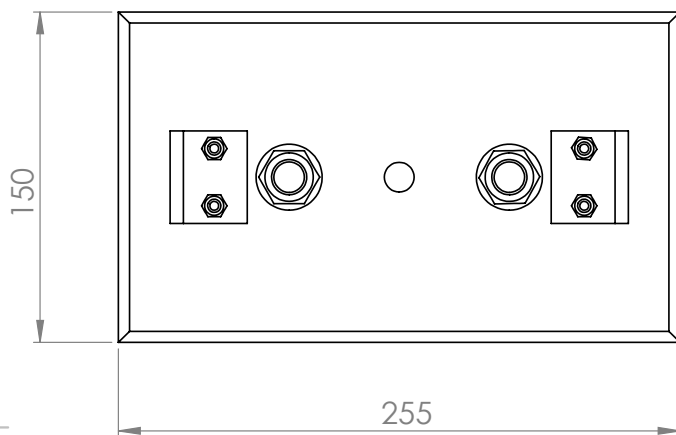
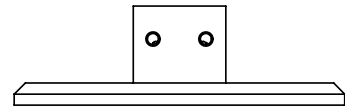
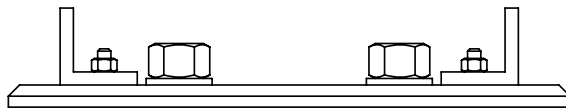
OPTION 1 - CONCRETE FOUNDATION



Fixation with small
base plate

alternativ

Fixation with large
base plate



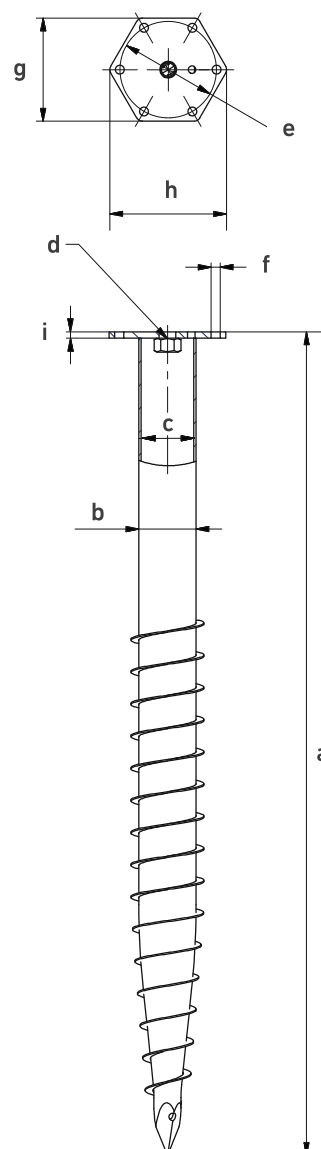
OPTION 2 - GROUND SCREW

The fixing of the juno solar light with a Krinner ground screw is only possible with the base-plate (255 mm x 150 mm x 10 mm).

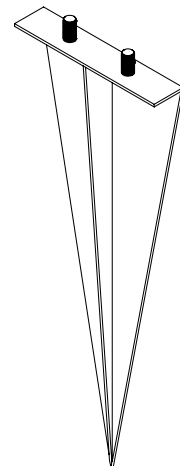
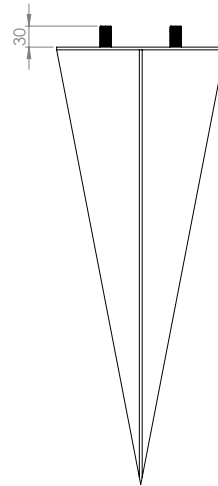
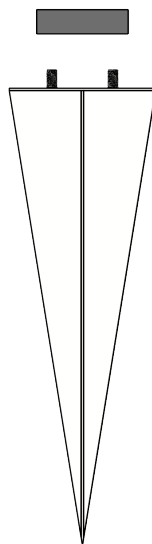
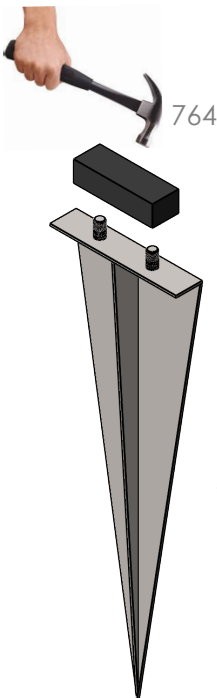
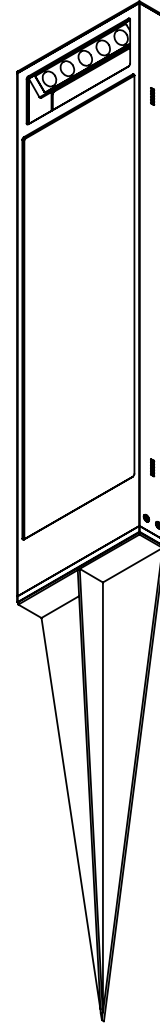
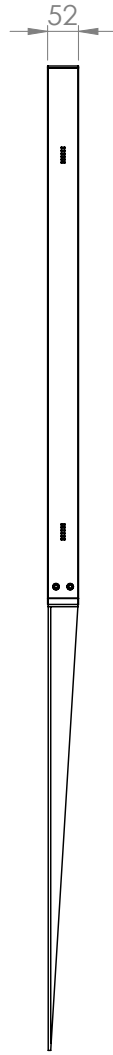
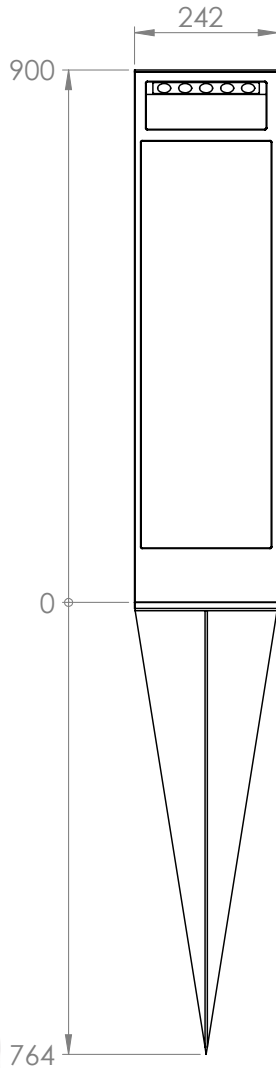
KRINNER Ground Screw

KSF M 76 x 800-M12

a Length (+/- 25mm)	815 mm
b Shaft outer diameter	76,10 mm
c Inner diameter	70,90 mm
d Thread	M12
e Pitch circle diameter	116 mm
g Flange wrench size	120 mm
h Flange outer diameter	136 mm
i Flange thickness	5 mm



OPTION 3 - MOUNTING WEDGE



References

juno
Graveyard / DE



juno
Bayern / DE

juno
National Guard / BHR

